

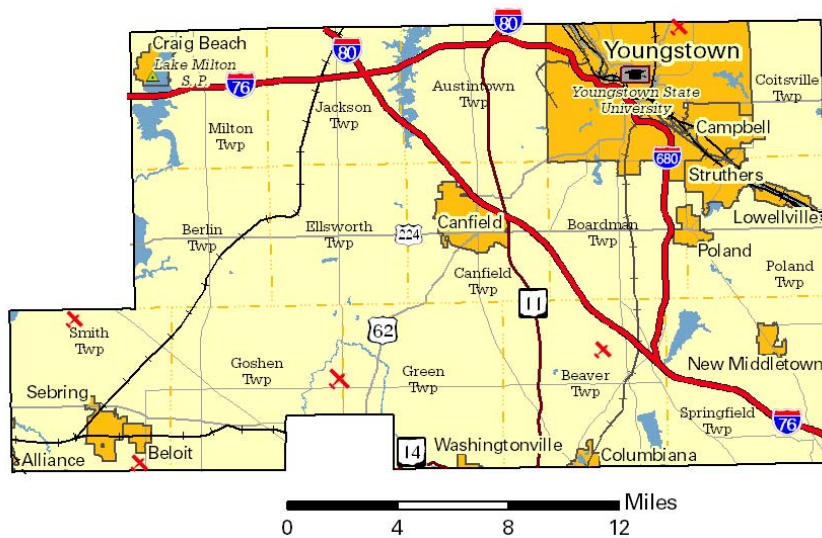
# Ohio County Profiles



Prepared by the Office of Research

## Mahoning County

**Established:** Act - March 1, 1846  
**2017 Population:** 229,796  
**Land Area:** 415.3 square miles  
**County Seat:** Youngstown City  
**Named for:** Native American word meaning "at the salt licks"



### Taxes

Taxable value of real property	\$3,849,081,530
Residential	\$2,738,016,060
Agriculture	\$175,578,360
Industrial	\$150,404,610
Commercial	\$779,075,680
Mineral	\$6,006,820
Ohio income tax liability	\$110,311,184
Average per return	\$1,063.44

### Land Use/Land Cover

	Percent
Developed, Lower Intensity	25.00%
Developed, Higher Intensity	4.64%
Barren (strip mines, gravel pits, etc.)	0.42%
Forest	30.06%
Shrub/Scrub and Grasslands	3.33%
Pasture/Hay	15.02%
Cultivated Crops	16.71%
Wetlands	2.17%
Open Water	2.66%

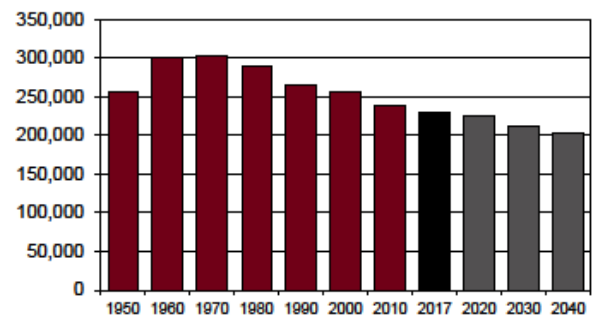
### Largest Places

	Est. 2017	Census 2010
Youngstown city (part)	64,593	66,971
Boardman twp UB	39,327	40,882
Austintown twp	35,226	36,722
Poland twp UB	11,950	12,412
Struthers city	10,254	10,713
Canfield twp UB	8,328	8,649
Campbell city	7,890	8,235
Canfield city	7,256	7,515
Springfield twp	6,478	6,703
Beaver twp UB	6,468	6,703

UB: Unincorporated balance.

### Total Population

Census		Estimated	
1800		1910	116,151
1810		1920	186,310
1820		1930	236,142
1830		1940	240,251
1840		1950	257,629
1850	23,735	1960	300,480
1860	25,894	1970	303,424
1870	31,001	1980	289,487
1880	42,871	1990	264,806
1890	55,979	2000	257,555
1900	70,134	2010	238,823
		2012	235,657
		2013	234,276
		2014	233,278
		2015	231,764
		2016	230,169
		2017	229,796
		Projected	
		2020	224,680
		2030	212,240
		2040	202,630



<b>Population by Race</b>	<b>Number</b>	<b>Percent</b>
ACS Total Population	233,015	100.0%
White	186,987	80.2%
African-American	36,102	15.5%
Native American	661	0.3%
Asian	1,867	0.8%
Pacific Islander	46	0.0%
Other	1,530	0.7%
Two or More Races	5,822	2.5%
Hispanic (may be of any race)	12,442	5.3%
<b>Total Minority</b>	<b>54,295</b>	<b>23.3%</b>

<b>Educational Attainment</b>	<b>Number</b>	<b>Percent</b>
Persons 25 years and over	164,692	100.0%
No high school diploma	16,299	9.9%
High school graduate	62,455	37.9%
Some college, no degree	36,824	22.4%
Associate degree	11,581	7.0%
Bachelor's degree	24,386	14.8%
Master's degree or higher	13,147	8.0%

<b>Family Type by Employment Status</b>	<b>Number</b>	<b>Percent</b>
Total Families	60,198	100.0%
Married couple, husband and wife in labor force	20,322	33.8%
Married couple, husband in labor force, wife not	8,323	13.8%
Married couple, wife in labor force, husband not	3,792	6.3%
Married couple, husband and wife not in labor force	9,105	15.1%
Male householder, in labor force	3,196	5.3%
Male householder, not in labor force	1,400	2.3%
Female householder, in labor force	9,262	15.4%
Female householder, not in labor force	4,798	8.0%

<b>Household Income</b>	<b>Number</b>	<b>Percent</b>
Total Households	97,484	100.0%
Less than \$10,000	8,981	9.2%
\$10,000 to \$19,999	13,763	14.1%
\$20,000 to \$29,999	13,492	13.8%
\$30,000 to \$39,999	10,737	11.0%
\$40,000 to \$49,999	8,797	9.0%
\$50,000 to \$59,999	7,919	8.1%
\$60,000 to \$74,999	9,236	9.5%
\$75,000 to \$99,999	10,484	10.8%
\$100,000 to \$149,999	9,327	9.6%
\$150,000 to \$199,999	2,407	2.5%
\$200,000 or more	2,341	2.4%
<b>Median household income</b>	<b>\$41,872</b>	

<b>Population by Age</b>	<b>Number</b>	<b>Percent</b>
ACS Total Population	233,015	100.0%
Under 5 years	11,964	5.1%
5 to 17 years	35,961	15.4%
18 to 24 years	20,398	8.8%
25 to 44 years	52,591	22.6%
45 to 64 years	67,491	29.0%
65 years and more	44,610	19.1%
<b>Median Age</b>	<b>43.4</b>	

<b>Family Type by Presence of Own Children Under 18</b>	<b>Number</b>	<b>Percent</b>
Total Families	60,361	100.0%
Married-couple families with own children	13,450	22.3%
Male householder, no wife present, with own children	2,155	3.6%
Female householder, no husband present, with own children	7,622	12.6%
Families with no own children	37,134	61.5%

<b>Poverty Status of Families By Family Type by Presence Of Related Children</b>	<b>Number</b>	<b>Percent</b>
Total Families	60,361	100.0%
Family income above poverty level	52,052	86.2%
Family income below poverty level	8,309	13.8%
Married couple, with related children	1,057	1.8%
Male householder, no wife present, with related children	704	1.2%
Female householder, no husband present, with related children	4,513	7.5%
Families with no related children	2,035	3.4%

<b>Ratio of Income To Poverty Level</b>	<b>Number</b>	<b>Percent</b>
Population for whom poverty status is determined	225,694	100.0%
Below 50% of poverty level	17,984	8.0%
50% to 99% of poverty level	22,839	10.1%
100% to 124% of poverty level	11,142	4.9%
125% to 149% of poverty level	11,734	5.2%
150% to 184% of poverty level	16,404	7.3%
185% to 199% of poverty level	6,822	3.0%
200% of poverty level or more	138,769	61.5%

<b>Geographical Mobility</b>	<b>Number</b>	<b>Percent</b>
Population aged 1 year and older	230,997	100.0%
Same house as previous year	201,419	87.2%
Different house, same county	18,498	8.0%
Different county, same state	6,270	2.7%
Different state	4,249	1.8%
Abroad	561	0.2%

Percentages may not sum to 100% due to rounding.

## Travel Time To Work

	Number	Percent
Workers 16 years and over	97,515	100.0%
Less than 15 minutes	32,405	33.2%
15 to 29 minutes	43,440	44.5%
30 to 44 minutes	12,399	12.7%
45 to 59 minutes	3,987	4.1%
60 minutes or more	5,284	5.4%

**Mean travel time** 21.6 minutes

## Housing Units

	Number	Percent
Total housing units	111,275	100.0%
Occupied housing units	97,484	87.6%
Owner occupied	66,569	68.3%
Renter occupied	30,915	31.7%
Vacant housing units	13,791	12.4%

## Year Structure Built

	Number	Percent
Total housing units	111,275	100.0%
Built 2014 or later	19	0.0%
Built 2010 to 2013	651	0.6%
Built 2000 to 2009	6,869	6.2%
Built 1990 to 1999	9,348	8.4%
Built 1980 to 1989	6,875	6.2%
Built 1970 to 1979	15,181	13.6%
Built 1960 to 1969	15,702	14.1%
Built 1950 to 1959	23,325	21.0%
Built 1940 to 1949	8,800	7.9%
Built 1939 or earlier	24,505	22.0%

**Median year built** 1960

## Value for Specified Owner-Occupied Housing Units

	Number	Percent
Specified owner-occupied housing units	66,569	100.0%
Less than \$20,000	4,688	7.0%
\$20,000 to \$39,999	5,317	8.0%
\$40,000 to \$59,999	6,653	10.0%
\$60,000 to \$79,999	8,451	12.7%
\$80,000 to \$99,999	8,848	13.3%
\$100,000 to \$124,999	7,764	11.7%
\$125,000 to \$149,999	6,028	9.1%
\$150,000 to \$199,999	8,729	13.1%
\$200,000 to \$299,999	6,534	9.8%
\$300,000 to \$499,999	2,756	4.1%
\$500,000 to \$999,999	654	1.0%
\$1,000,000 or more	147	0.2%

**Median value** \$98,300

## House Heating Fuel

	Number	Percent
Occupied housing units	97,484	100.0%
Utility gas	77,444	79.4%
Bottled, tank or LP gas	1,664	1.7%
Electricity	12,513	12.8%
Fuel oil, kerosene, etc	2,410	2.5%
Coal, coke or wood	1,050	1.1%
Solar energy or other fuel	669	0.7%
No fuel used	1,734	1.8%

Percentages may not sum to 100% due to rounding.

## Gross Rent

	Number	Percent
Specified renter-occupied housing units	30,915	100.0%
Less than \$100	260	0.8%
\$100 to \$199	595	1.9%
\$200 to \$299	1,910	6.2%
\$300 to \$399	1,091	3.5%
\$400 to \$499	3,140	10.2%
\$500 to \$599	5,380	17.4%
\$600 to \$699	4,560	14.8%
\$700 to \$799	3,574	11.6%
\$800 to \$899	2,821	9.1%
\$900 to \$999	1,841	6.0%
\$1,000 to \$1,499	2,659	8.6%
\$1,500 or more	870	2.8%
No cash rent	2,214	7.2%

**Median gross rent** \$637

Median gross rent as a percentage of household income 30.4

## Selected Monthly Owner Costs for Specified Owner-Occupied Housing Units

	Number	Percent
Specified owner-occupied housing units with a mortgage	37,885	100.0%
Less than \$400	747	2.0%
\$400 to \$599	3,344	8.8%
\$600 to \$799	6,299	16.6%
\$800 to \$999	7,144	18.9%
\$1,000 to \$1,249	7,521	19.9%
\$1,250 to \$1,499	5,016	13.2%
\$1,500 to \$1,999	4,667	12.3%
\$2,000 to \$2,999	2,307	6.1%
\$3,000 or more	840	2.2%

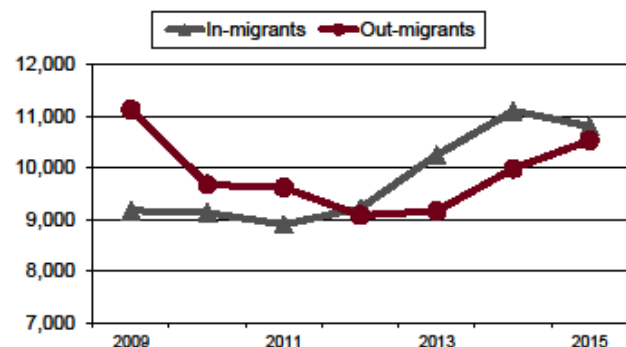
**Median monthly owners cost** \$1,047

Median monthly owners cost as a percentage of household income 20.3

## Vital Statistics

	Number	Rate
Births / rate per 1,000 women aged 15 to 44	2,490	63.3
Teen births / rate per 1,000 females 15-19	172	25.4
Deaths / rate per 100,000 population	3,029	1,316.9

## Migration



## Agriculture

Land in farms (acres)	74,966
Number of farms	578
Average size (acres)	130
Total cash receipts	\$65,449,000
Per farm	\$113,234
Receipts for crops	\$30,032,000
Receipts for livestock/products	\$35,417,000

## Education

Public schools buildings	73
Students (Average Daily Membership)	31,573
Teachers (Full Time Equivalent)	2,129.4
Expenditures per student	\$9,610
Graduation rate	84.5
Non-public schools	14
Students	3,273
4-year public universities	1
Branches	0
2-year public colleges/satellites	1
Private universities and colleges	0
Public libraries (Districts / Facilities)	1 / 15

## Transportation

Registered motor vehicles	257,022
Passenger cars	182,714
Noncommercial trucks	30,057
Total license revenue	\$7,105,436.95
Permissive tax revenue	\$4,046,130.00
Interstate highway miles	55.34
Turnpike miles	24.51
U.S. highway miles	58.35
State highway miles	174.85
County, township, and municipal road miles	1,677.00
Commercial airports	5

## Health Care

Physicians (MDs & DOs)	647
Registered hospitals	9
Number of beds	1,522
Licensed nursing homes	28
Number of beds	2,659
Licensed residential care	23
Number of beds	1,724
Persons with health insurance (Aged 0 to 64)	93.8%
Adults with insurance (Aged 18 to 64)	92.7%
Children with insurance (Aged Under 19)	96.8%

## Voting

Number of registered voters	166,107
Voted in 2016 election	117,636
Percent turnout	70.8%

## Communications

Television stations	4
Radio stations	13
Daily newspapers	1
Circulation	38,215
Weekly newspapers	0
Circulation	0

## Crime

Total crimes reported in Uniform Crime Report	6,370
Violent crime	585
Property crime	5,642
Arson	143

## Finance

FDIC insured financial institutions (HQs)	2
Assets (000)	\$4,563,421
Branch offices	73
Institutions represented	11

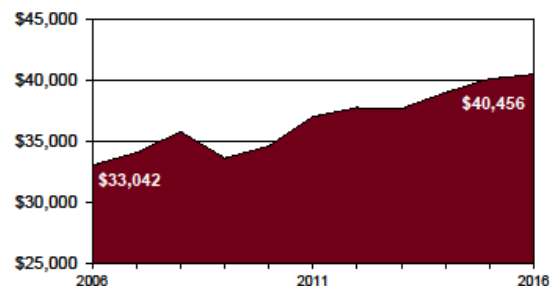
## Transfer Payments

Total transfer payments	\$2,551,025,000
Payments to individuals	\$2,493,669,000
Retirement and disability	\$878,916,000
Medical payments	\$1,219,768,000
Income maintenance (Supplemental SSI, family assistance, food stamps, etc)	\$247,512,000
Unemployment benefits	\$24,028,000
Veterans benefits	\$56,521,000
Federal education and training assistance	\$46,536,000
Other payments to individuals	\$20,388,000
Total personal income	\$9,305,144,000
Dependency ratio	27.4%
(Percent of income from transfer payments)	

## State Parks, Forests, Nature Preserves, Scenic Waterways, And Wildlife Areas

Areas/Facilities	4
Acreage	5,004.62

## Per Capita Personal Income



## Civilian Labor Force

	2017	2016	2015	2014	2013
Civilian labor force	105,200	105,700	106,900	107,900	109,700
Employed	97,900	99,100	100,400	100,600	100,300
Unemployed	7,300	6,700	6,500	7,200	9,400
Unemployment rate	6.9	6.3	6.1	6.7	8.5

## Establishments, Employment, and Wages by Sector: 2016

Industrial Sector	Number of Establishments	Average Employment	Total Wages	Average Weekly Wage
Private Sector	5,634	84,339	\$2,999,536,717	\$684
Goods-Producing	867	13,674	\$686,560,485	\$966
Natural Resources and Mining	44	351	\$19,892,262	\$1,091
Constuction	491	4,563	\$248,930,864	\$1,049
Manufacturing	333	8,761	\$417,737,359	\$917
Service-Providing	4,768	70,665	\$2,312,976,232	\$629
Trade, Transportation and Utilities	1,401	20,241	\$694,289,112	\$660
Information	68	1,065	\$54,172,707	\$979
Financial Services	548	2,855	\$140,499,179	\$946
Professional and Business Services	855	11,960	\$454,628,640	\$731
Education and Health Services	843	19,546	\$724,183,786	\$713
Leisure and Hospitality	609	11,957	\$170,621,272	\$274
Other Services	439	3,038	\$74,394,189	\$471
Federal Government		1,160	\$74,792,339	\$1,240
State Government		2,587	\$153,192,859	\$1,139
Local Government		9,568	\$392,180,316	\$788

Private Sector total includes Unclassified establishments not shown.

## Change Since 2011

Private Sector	-3.1%	1.7%	10.4%	8.6%
Goods-Producing	-7.9%	5.0%	15.5%	10.0%
Natural Resources and Mining	10.0%	-9.8%	10.2%	22.3%
Construction	-8.6%	12.9%	24.9%	10.7%
Manufacturing	-8.8%	2.0%	10.7%	8.5%
Service-Producing	-2.2%	1.0%	9.0%	7.9%
Trade, Transportation and Utilities	-2.1%	-3.6%	4.7%	8.7%
Information	-20.9%	-9.6%	4.1%	15.2%
Financial Services	-2.8%	-22.0%	-8.5%	17.4%
Professional and Business Services	1.4%	-0.9%	9.4%	10.4%
Education and Health Services	-2.0%	4.4%	13.2%	8.5%
Leisure and Hospitality	-0.2%	18.1%	35.8%	14.6%
Other Services	-6.8%	-4.3%	3.6%	8.3%
Federal Government		-11.5%	-10.4%	1.3%
State Government		-15.9%	-8.8%	8.5%
Local Government		4.7%	8.1%	3.3%

## Residential

### Construction

	2013	2014	2015	2016	2017
Total units	153	135	127	146	139
Total valuation (000)	\$35,385	\$30,908	\$28,181	\$32,244	\$32,376
Total single-unit bldgs	149	135	127	142	139
Average cost per unit	\$232,646	\$228,947	\$221,901	\$224,775	\$232,923
Total multi-unit bldg units	4	0	0	4	0
Average cost per unit	\$180,270	\$0	\$0	\$81,450	\$0

## Major & Notable Employers

Austintown Local Schools	Govt
Boardman Local Schools	Govt
InfoCision Management	Serv
Mahoning County Government	Govt
Mercy Health Youngstown	Serv
Schwebel Baking Company	Mfg
Steward Health Care	Serv
UCFC/Home Savings & Loan Co	Fin
Vallourec Star/V&M Star	Mfg
VXI Global Solutions	Serv
Wal-Mart Stores Inc	Trade
Youngstown City Schools	Govt
Youngstown State University	Govt