

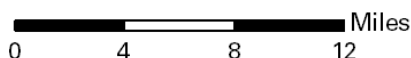
# Ohio County Profiles



Prepared by the Office of Policy, Research and Strategic Planning

## Holmes County

**Established:** Act - January 20, 1824  
**2010 Population:** 42,366  
**Land Area:** 423.0 square miles  
**County Seat:** Millersburg Village  
**Named for:** Major Holmes, War of 1812



### Taxes

Taxable value of real property	\$730,205,480
Residential	\$412,494,020
Agriculture	\$187,683,340
Industrial	\$37,389,570
Commercial	\$88,751,840
Mineral	\$3,886,710
Ohio income tax liability	\$14,248,710
Average per return	\$995.51

### Land Use/Land Cover

	Percent
Urban (Residential/Commercial/Industrial/Transportation and Urban Grasses)	0.60%
Cropland	28.88%
Pasture	18.42%
Forest	51.08%
Open Water	0.14%
Wetlands (Wooded/Herbaceous)	0.88%
Bare/Mines	0.00%

### Largest Places

	Census 2010	Census 2000
Salt Creek twp	4,252	3,778
Berlin twp	4,252	3,857
Paint twp	4,134	3,547
Clark twp UB	3,936	3,614
Walnut Creek twp	3,821	3,530
Mechanic twp	3,127	2,652
Millersburg vlg	3,025	3,326
Prairie twp UB	2,761	2,399
Hardy twp UB	2,624	2,317
Ripley twp	2,338	2,194

UB: Unincorporated balance.

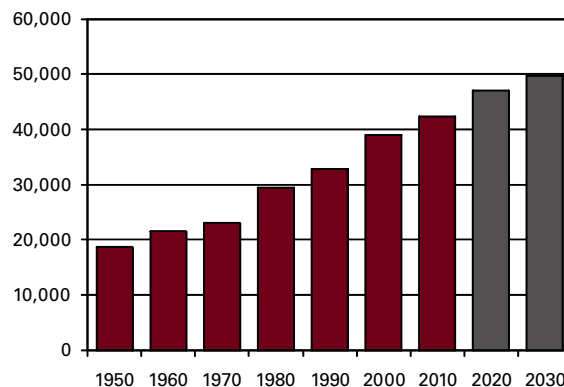
### Total Population

#### Census

1800	1880	20,776	1950	18,760
1810	1890	21,139	1960	21,591
1820	1900	19,511	1970	23,024
1830	1910	17,909	1980	29,416
1840	1920	16,965	1990	32,849
1850	1930	16,726	2000	38,943
1860	1940	17,876	2010	42,366
1870	18,177			

#### Projected

2020	47,010
2030	49,690



<b>Population by Race</b>	<b>Number</b>	<b>Percent</b>
ACS Total Population	42,068	100.0%
White	41,566	98.8%
African-American	85	0.2%
Native American	16	0.0%
Asian	43	0.1%
Pacific Islander	16	0.0%
Other	93	0.2%
Two or More Races	249	0.6%
Hispanic (may be of any race)	302	0.7%
<b>Total Minority</b>	<b>711</b>	<b>1.7%</b>

<b>Educational Attainment</b>	<b>Number</b>	<b>Percent</b>
Persons 25 years and over	23,393	100.0%
No high school diploma	10,223	43.7%
High school graduate	7,890	33.7%
Some college, no degree	2,130	9.1%
Associate degree	960	4.1%
Bachelor's degree	1,300	5.6%
Master's degree or higher	890	3.8%

<b>Family Type by Employment Status</b>	<b>Number</b>	<b>Percent</b>
Total Families	9,630	100.0%
Married couple, husband and wife in labor force	3,283	34.1%
Married couple, husband in labor force, wife not	3,815	39.6%
Married couple, wife in labor force, husband not	392	4.1%
Married couple, husband and wife not in labor force	1,024	10.6%
Male householder, in labor force	174	1.8%
Male householder, not in labor force	87	0.9%
Female householder, in labor force	505	5.2%
Female householder, not in labor force	350	3.6%

<b>Household Income</b>	<b>Number</b>	<b>Percent</b>
Total Households	12,120	100.0%
Less than \$10,000	840	6.9%
\$10,000 to \$19,999	1,180	9.7%
\$20,000 to \$29,999	1,518	12.5%
\$30,000 to \$39,999	1,835	15.1%
\$40,000 to \$49,999	1,669	13.8%
\$50,000 to \$59,999	1,091	9.0%
\$60,000 to \$74,999	1,146	9.5%
\$75,000 to \$99,999	1,400	11.6%
\$100,000 to \$149,999	1,027	8.5%
\$150,000 to \$199,999	285	2.4%
\$200,000 or more	129	1.1%
<b>Median household income</b>	<b>\$43,533</b>	

<b>Population by Age</b>	<b>Number</b>	<b>Percent</b>
ACS Total Population	42,068	100.0%
Under 5 years	4,112	9.8%
5 to 17 years	10,497	25.0%
18 to 24 years	4,066	9.7%
25 to 44 years	9,995	23.8%
45 to 64 years	8,650	20.6%
65 years and more	4,748	11.3%
<b>Median Age</b>	<b>29.3</b>	

<b>Family Type by Presence of Own Children Under 18</b>	<b>Number</b>	<b>Percent</b>
Total Families	9,630	100.0%
Married-couple families with own children	4,362	45.3%
Male householder, no wife present, with own children	125	1.3%
Female householder, no husband present, with own children	389	4.0%
Families with no own children	4,754	49.4%

<b>Poverty Status of Families By Family Type by Presence Of Related Children</b>	<b>Number</b>	<b>Percent</b>
Total Families	9,630	100.0%
Family income above poverty level	8,620	89.5%
Family income below poverty level	1,010	10.5%
Married couple, with related children	491	48.6%
Male householder, no wife present, with related children	6	0.6%
Female householder, no husband present, with related children	247	24.5%
Families with no related children	266	26.3%

<b>Ratio of Income To Poverty Level</b>	<b>Number</b>	<b>Percent</b>
Population for whom poverty status is determined	41,333	100.0%
Below 50% of poverty level	2,046	5.0%
50% to 99% of poverty level	3,446	8.3%
100% to 149% of poverty level	4,707	11.4%
150% to 199% of poverty level	7,144	17.3%
200% of poverty level or more	23,990	58.0%

<b>Geographical Mobility</b>	<b>Number</b>	<b>Percent</b>
Population aged 1 year and older	41,268	100.0%
Same house as previous year	38,861	94.2%
Different house, same county	1,677	4.1%
Different county, same state	575	1.4%
Different state	100	0.2%
Abroad	55	0.1%

Percentages may not sum to 100% due to rounding.

## Travel Time To Work

	Number	Percent
Workers 16 years and over	15,170	100.0%
Less than 15 minutes	6,349	41.9%
15 to 29 minutes	4,460	29.4%
30 to 44 minutes	2,478	16.3%
45 to 59 minutes	640	4.2%
60 minutes or more	1,243	8.2%

Mean travel time **22.2 minutes**

## Housing Units

	Number	Percent
Total housing units	13,518	100.0%
Occupied housing units	12,120	89.7%
Owner occupied	9,551	70.7%
Renter occupied	2,569	19.0%
Vacant housing units	1,398	10.3%

## Year Structure Built

	Number	Percent
Total housing units	13,518	100.0%
Built 2005 or later	427	3.2%
Built 2000 to 2004	1,192	8.8%
Built 1990 to 1999	2,161	16.0%
Built 1980 to 1989	1,703	12.6%
Built 1970 to 1979	1,860	13.8%
Built 1960 to 1969	956	7.1%
Built 1950 to 1959	1,098	8.1%
Built 1940 to 1949	594	4.4%
Built 1939 or earlier	3,527	26.1%

Median year built **1973**

## Value for Specified Owner-Occupied Housing Units

	Number	Percent
Specified owner-occupied housing units	9,551	100.0%
Less than \$20,000	345	3.6%
\$20,000 to \$39,999	257	2.7%
\$40,000 to \$59,999	197	2.1%
\$60,000 to \$79,999	501	5.2%
\$80,000 to \$99,999	971	10.2%
\$100,000 to \$124,999	1,243	13.0%
\$125,000 to \$149,999	1,033	10.8%
\$150,000 to \$199,999	1,979	20.7%
\$200,000 to \$299,999	1,726	18.1%
\$300,000 to \$499,999	953	10.0%
\$500,000 to \$999,999	231	2.4%
\$1,000,000 or more	115	1.2%

Median value **\$154,600**

## House Heating Fuel

	Number	Percent
Occupied housing units	12,120	100.0%
Utility gas	6,035	49.8%
Bottled, tank or LP gas	1,337	11.0%
Electricity	1,308	10.8%
Fuel oil, kerosene, etc	564	4.7%
Coal, coke or wood	2,723	22.5%
Solar energy or other fuel	147	1.2%
No fuel used	6	0.0%

Percentages may not sum to 100% due to rounding.

## Gross Rent

	Number	Percent
Specified renter-occupied housing units	2,569	100.0%
Less than \$100	14	0.5%
\$100 to \$199	154	6.0%
\$200 to \$299	203	7.9%
\$300 to \$399	146	5.7%
\$400 to \$499	352	13.7%
\$500 to \$599	516	20.1%
\$600 to \$699	312	12.1%
\$700 to \$799	187	7.3%
\$800 to \$899	117	4.6%
\$900 to \$999	49	1.9%
\$1,000 to \$1,499	32	1.2%
\$1,500 or more	0	0.0%
No cash rent	487	19.0%

Median gross rent **\$533**

Median gross rent as a percentage of household income **20.9**

## Selected Monthly Owner Costs for Specified Owner-Occupied Housing Units

	Number	Percent
Specified owner-occupied housing units with a mortgage	5,017	100.0%
Less than \$400	29	0.6%
\$400 to \$599	404	8.1%
\$600 to \$799	577	11.5%
\$800 to \$999	961	19.2%
\$1,000 to \$1,249	1,042	20.8%
\$1,250 to \$1,499	955	19.0%
\$1,500 to \$1,999	727	14.5%
\$2,000 to \$2,999	243	4.8%
\$3,000 or more	79	1.6%

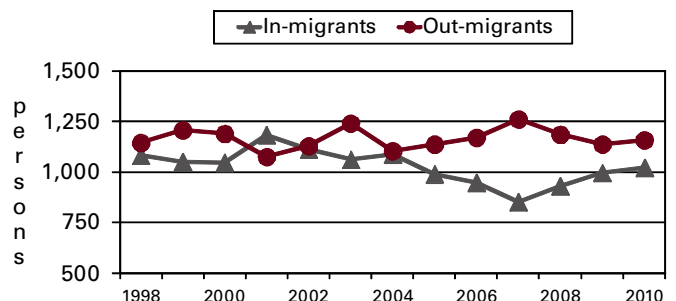
Median monthly owners cost **\$1,129**

Median monthly owners cost as a percentage of household income **24.0**

## Vital Statistics

	Number	Rate
Births / rate per 1,000 women aged 15 to 44	843	101.8
Teen births / rate per 1,000 females 15-19	29	17.4
Deaths / rate per 100,000 population	276	665.9
Marriages / rate per 1,000 population	316	7.6
Divorces / rate per 1,000 population	92	2.2

## Migration



## Agriculture

Land in farms (acres)	181,000
Number of farms	1,510
Average size (acres)	120
Total cash receipts	\$120,968,000
Per farm	\$79,584

## Education

Public schools buildings	16
Students (Average Daily Membership)	4,462
Teachers (Full Time Equivalent)	280.3
Expenditures per student	\$9,251
Graduation rate	93.8
Non-public schools	0
Students	0
4-year public universities	0
Branches	0
2-year public colleges	0
Private universities and colleges	0
Public libraries (Main / Branches)	1 / 4

## Transportation

Registered motor vehicles	37,108
Passenger cars	17,215
Noncommercial trucks	6,800
Total license revenue	\$1,385,497.00
Interstate highway miles	0.00
Turnpike miles	0.00
U.S. highway miles	37.14
State highway miles	136.82
County, township, and municipal road miles	847.64
Commercial airports	1

## Voting

Number of precincts	19
Number of registered voters	17,807
Voted in 2010 election	9,283
Percent turnout	52.1%

## Health Care

Physicians (MDs & DOs)	28
Registered hospitals	1
Number of beds	69
Licensed nursing homes	5
Number of beds	587
Licensed residential care	1
Number of beds	60
Adults with employer-based insurance	57.1%
Children with employer-based insurance	58.9%

## State Parks, Forests, Nature Preserves, And Wildlife Areas

Areas/Facilities	4
Acreage	1,522.41

## Communications

Television stations	0
Radio stations	1
Daily newspapers	0
Circulation	0
Weekly newspapers	2
Circulation	5,500

## Crime

Total crimes reported in Uniform Crime Report	892
---	-----

## Finance

FDIC insured financial institutions (HQs)	3
Assets (000)	\$904,773
Branch offices	21
Institutions represented	8

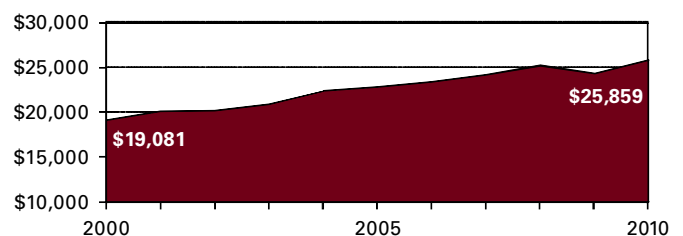
## Transfer Payments

Total transfer payments	\$165,325,000
Payments to individuals	\$157,694,000
Retirement and disability	\$59,398,000
Medical payments	\$60,503,000
Income maintenance (Supplemental SSI, family assistance, food stamps, etc)	\$13,520,000
Unemployment benefits	\$11,428,000
Veterans benefits	\$3,298,000
Federal education and training assistance	\$7,068,000
Other payments to individuals	\$2,479,000
Total personal income	\$990,282,000
Dependency ratio	16.7%

## Federal Expenditures

Direct expenditures or obligations	\$131,036,025
Retirement and disability	\$53,227,182
Other direct payments	\$39,031,946
Grant awards	\$31,652,099
Highway planning and construction	\$7,698,804
Temporary assistance to needy families	\$2,497,040
Medical assistance program	\$14,762,699
Procurement contract awards	\$1,386,924
Dept. of Defense	\$22,517
Salary and wages	\$5,737,874
Dept. of Defense	\$71,000
Other federal assistance	\$37,025,918
Direct loans	\$2,389,071
Guaranteed loans	\$8,652,554
Insurance	\$25,984,293

## Per Capita Personal Income



**Civilian Labor Force**

	2007	2008	2009	2010	2011
Civilian labor force	19,500	19,300	19,200	19,400	19,700
Employed	18,800	18,400	17,700	18,000	18,500
Unemployed	800	900	1,500	1,400	1,200
Unemployment rate	4.0	4.9	7.7	7.4	6.1

**Establishments, Employment, and Wages by Sector: 2010**

Industrial Sector	Number of Establishments	Average Employment	Total Wages	Average Weekly Wage
Private Sector	1,025	14,713	\$423,036,015	\$553
Goods-Producing	473	7,616	\$243,952,610	\$616
Natural Resources and Mining	37	293	\$9,239,350	\$606
Constuction	193	1,682	\$53,885,353	\$616
Manufacturing	244	5,641	\$180,827,907	\$616
Service-Providing	552	7,097	\$179,083,405	\$485
Trade, Transportation and Utilities	262	3,033	\$78,629,083	\$498
Information	6	90	\$2,683,474	\$572
Financial Services	45	409	\$14,718,723	\$693
Professional and Business Services	65	1,135	\$36,672,935	\$621
Education and Health Services	45	956	\$25,713,509	\$517
Leisure and Hospitality	80	1,255	\$15,101,968	\$231
Other Services	48	218	\$5,553,563	\$490
Federal Government		77	\$3,239,981	\$807
State Government		38	\$1,809,137	\$914
Local Government		1,578	\$53,431,970	\$651

Private Sector total includes Unclassified establishments not shown.

**Change Since 2005**

Private Sector	-4.8%	-6.6%	-0.6%	6.6%
Goods-Producing	-9.4%	-7.7%	-1.9%	6.2%
Natural Resources and Mining	0.0%	-11.7%	-3.1%	9.8%
Construction	-18.9%	-1.1%	12.2%	13.4%
Manufacturing	-1.2%	-9.3%	-5.4%	4.2%
Service-Producing	-0.5%	-5.4%	1.3%	7.1%
Trade, Transportation and Utilities	1.2%	-4.0%	5.0%	9.2%
Information	0.0%	11.1%	26.2%	12.6%
Financial Services	-10.0%	0.7%	15.1%	14.4%
Professional and Business Services	-8.5%	2.3%	7.7%	5.1%
Education and Health Services	-10.0%	-26.3%	-25.6%	1.0%
Leisure and Hospitality	8.1%	2.6%	19.2%	16.1%
Other Services	6.7%	3.8%	1.8%	-2.0%
Federal Government		4.1%	12.1%	6.9%
State Government		-5.0%	19.3%	24.0%
Local Government		-3.0%	8.7%	12.0%

**Business Numbers**

	2007	2008	2009	2010	2011
Business starts	68	54	75	46	54
Active businesses	908	879	889	892	905

**Major Employers**

Case Foods Inc	Mfg
East Holmes Local Schools	Govt
International Automotive	Mfg
Overhead Door/Wayne-Dalton	Mfg
Pomerene Hospital	Serv
Rexam plc	Mfg
Sperry & Rice Mfg Co LLC	Mfg
Weaver Leather Goods Inc	Mfg
West Holmes Local Schools	Govt

**Residential**

**Construction**

	2007	2008	2009	2010	2011
Total units	8	15	1	3	39
Total valuation (000)	\$1,040	\$1,447	\$93	\$283	\$4,180
Total single-unit bldgs	8	3	1	3	1
Average cost per unit	\$130,000	\$119,667	\$93,000	\$94,333	\$180,000
Total multi-unit bldg units	0	12	0	0	38
Average cost per unit	\$0	\$90,683	\$0	\$0	\$105,263