

# Ohio County Profiles

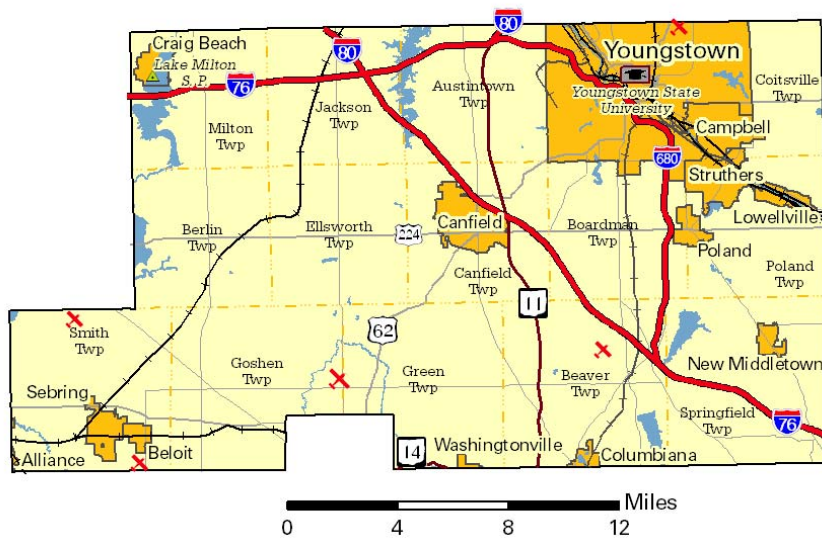


Department of  
Development

Prepared by the Office of Policy, Research and Strategic Planning

## Mahoning County

**Established:** Act - March 1, 1846  
**2010 Population:** 238,823  
**Land Area:** 415.3 square miles  
**County Seat:** Youngstown City  
**Named for:** Native American word meaning "at the salt licks"



### Taxes

Taxable value of real property	\$3,942,648,410
Residential	\$2,892,245,540
Agriculture	\$133,873,060
Industrial	\$132,394,360
Commercial	\$775,064,360
Mineral	\$9,071,090
Ohio income tax liability	\$137,667,568
Average per return	\$1,287.20

### Land Use/Land Cover

	Percent
Urban (Residential/Commercial/Industrial/Transportation and Urban Grasses)	22.97%
Cropland	22.53%
Pasture	9.44%
Forest	41.07%
Open Water	2.00%
Wetlands (Wooded/Herbaceous)	1.67%
Bare/Mines	0.31%

### Largest Places

	Census 2010	Census 2000
Youngstown city (pt.)	66,971	82,026
Struthers city	10,713	11,756
Campbell city	8,235	9,460
Canfield city	7,515	7,374
Sebring village	4,420	4,912
Poland village	2,555	2,866
New Middletown village	1,621	1,682
Craig Beach village	1,180	1,254
Lowellville village	1,155	1,281
Beloit village	978	1,024

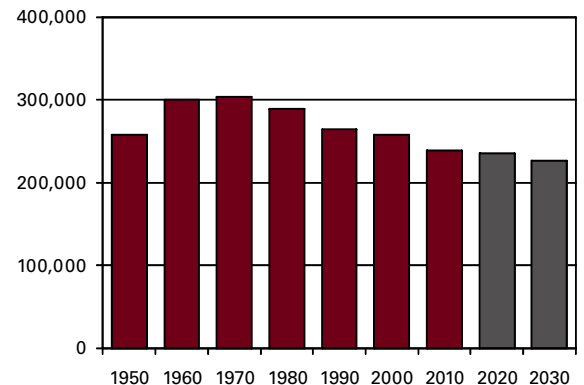
### Total Population

#### Census

1800	1880	42,871	1950	257,629	
1810	1890	55,979	1960	300,480	
1820	1900	70,134	1970	303,424	
1830	1910	116,151	1980	289,487	
1840	1920	186,310	1990	264,806	
1850	23,735	1930	236,142	2000	257,555
1860	25,894	1940	240,251	2010	238,823
1870	31,001				

#### Projected

2020	235,350
2030	226,800



## Population by Race

	Number	Percent
ACS Total Population	241,071	100.0%
White	195,506	81.1%
African-American	38,291	15.9%
Native American	384	0.2%
Asian	1,537	0.6%
Pacific Islander	7	0.0%
Other	2,032	0.8%
Two or More Races	3,314	1.4%
Hispanic (may be of any race)	8,670	3.6%
<b>Total Minority</b>	<b>50,995</b>	<b>21.2%</b>

## Educational Attainment

	Number	Percent
Persons 25 years and over	167,219	100.0%
No high school diploma	22,553	13.5%
High school graduate	68,571	41.0%
Some college, no degree	33,217	19.9%
Associate degree	10,126	6.1%
Bachelor's degree	21,558	12.9%
Master's degree or higher	11,194	6.7%

## Family Type by Employment Status

	Number	Percent
Total Families	65,317	100.0%
Married couple, husband and wife in labor force	23,868	36.5%
Married couple, husband in labor force, wife not	8,793	13.5%
Married couple, wife in labor force, husband not	3,857	5.9%
Married couple, husband and wife not in labor force	9,768	15.0%
Male householder, in labor force	2,920	4.5%
Male householder, not in labor force	1,201	1.8%
Female householder, in labor force	9,797	15.0%
Female householder, not in labor force	5,113	7.8%

## Household Income

	Number	Percent
Total Households	100,368	100.0%
Less than \$10,000	10,107	10.1%
\$10,000 to \$19,999	15,860	15.8%
\$20,000 to \$29,999	13,628	13.6%
\$30,000 to \$39,999	11,527	11.5%
\$40,000 to \$49,999	9,935	9.9%
\$50,000 to \$59,999	8,133	8.1%
\$60,000 to \$74,999	10,463	10.4%
\$75,000 to \$99,999	9,354	9.3%
\$100,000 to \$149,999	7,805	7.8%
\$150,000 to \$199,999	2,034	2.0%
\$200,000 or more	1,522	1.5%
<b>Median household income</b>	<b>\$38,977</b>	

Percentages may not sum to 100% due to rounding.

## Population by Age

	Number	Percent
ACS Total Population	241,071	100.0%
Under 5 years	13,219	5.5%
5 to 17 years	40,450	16.8%
18 to 24 years	20,183	8.4%
25 to 44 years	56,911	23.6%
45 to 64 years	68,479	28.4%
65 years and more	41,829	17.4%
<b>Median Age</b>	<b>42.0</b>	

## Family Type by Presence of Own Children Under 18

	Number	Percent
Total Families	65,317	100.0%
Married-couple families with own children	16,882	25.8%
Male householder, no wife present, with own children	1,587	2.4%
Female householder, no husband present, with own children	8,591	13.2%
Families with no own children	38,257	58.6%

## Poverty Status of Families By Family Type by Presence Of Related Children

	Number	Percent
Total Families	65,317	100.0%
Family income above poverty level	56,899	87.1%
Family income below poverty level	8,418	12.9%
Married couple, with related children	1,146	13.6%
Male householder, no wife present, with related children	650	7.7%
Female householder, no husband present, with related children	4,755	56.5%
Families with no related children	1,867	22.2%

## Ratio of Income To Poverty Level

	Number	Percent
Population for whom poverty status is determined	234,133	100.0%
Below 50% of poverty level	16,531	7.1%
50% to 99% of poverty level	22,645	9.7%
100% to 149% of poverty level	22,723	9.7%
150% to 199% of poverty level	21,502	9.2%
200% of poverty level or more	150,732	64.4%

## Geographical Mobility

	Number	Percent
Population aged 1 year and older	238,575	100.0%
Same house as previous year	211,377	88.6%
Different house, same county	18,023	7.6%
Different county, same state	6,037	2.5%
Different state	2,724	1.1%
Abroad	414	0.2%

## Travel Time To Work

	Number	Percent
Workers 16 years and over	100,701	100.0%
Less than 15 minutes	34,854	34.6%
15 to 29 minutes	44,258	43.9%
30 to 44 minutes	12,758	12.7%
45 to 59 minutes	3,449	3.4%
60 minutes or more	5,382	5.3%

Mean travel time **21.0 minutes**

## Housing Units

	Number	Percent
Total housing units	113,980	100.0%
Occupied housing units	100,368	88.1%
Owner occupied	72,619	72.4%
Renter occupied	27,749	27.6%
Vacant housing units	13,612	11.9%

## Year Structure Built

	Number	Percent
Total housing units	113,980	100.0%
Built 2005 or later	967	0.8%
Built 2000 to 2004	4,590	4.0%
Built 1990 to 1999	9,542	8.4%
Built 1980 to 1989	6,862	6.0%
Built 1970 to 1979	15,885	13.9%
Built 1960 to 1969	14,678	12.9%
Built 1950 to 1959	22,976	20.2%
Built 1940 to 1949	11,645	10.2%
Built 1939 or earlier	26,835	23.5%

Median year built **1958**

## Value for Specified Owner-Occupied Housing Units

	Number	Percent
Specified owner-occupied housing units	72,619	100.0%
Less than \$20,000	3,851	5.3%
\$20,000 to \$39,999	5,669	7.8%
\$40,000 to \$59,999	6,669	9.2%
\$60,000 to \$79,999	10,979	15.1%
\$80,000 to \$99,999	11,495	15.8%
\$100,000 to \$124,999	8,626	11.9%
\$125,000 to \$149,999	7,574	10.4%
\$150,000 to \$199,999	8,799	12.1%
\$200,000 to \$299,999	5,871	8.1%
\$300,000 to \$499,999	2,432	3.3%
\$500,000 to \$999,999	453	0.6%
\$1,000,000 or more	201	0.3%

Median value **\$95,800**

## House Heating Fuel

	Number	Percent
Occupied housing units	100,368	100.0%
Utility gas	80,861	80.6%
Bottled, tank or LP gas	2,217	2.2%
Electricity	11,982	11.9%
Fuel oil, kerosene, etc	3,312	3.3%
Coal, coke or wood	929	0.9%
Solar energy or other fuel	893	0.9%
No fuel used	174	0.2%

Percentages may not sum to 100% due to rounding.

## Gross Rent

	Number	Percent
Specified renter-occupied housing units	27,749	100.0%
Less than \$100	461	1.7%
\$100 to \$199	1,307	4.7%
\$200 to \$299	1,254	4.5%
\$300 to \$399	1,987	7.2%
\$400 to \$499	4,386	15.8%
\$500 to \$599	5,082	18.3%
\$600 to \$699	3,734	13.5%
\$700 to \$799	2,812	10.1%
\$800 to \$899	1,626	5.9%
\$900 to \$999	1,164	4.2%
\$1,000 to \$1,499	1,559	5.6%
\$1,500 or more	294	1.1%
No cash rent	2,083	7.5%

Median gross rent **\$565**

Median gross rent as a percentage of household income **32.0**

## Selected Monthly Owner Costs for Specified Owner-Occupied Housing Units

	Number	Percent
Specified owner-occupied housing units with a mortgage	44,878	100.0%
Less than \$400	622	1.4%
\$400 to \$599	3,436	7.7%
\$600 to \$799	7,002	15.6%
\$800 to \$999	8,547	19.0%
\$1,000 to \$1,249	9,022	20.1%
\$1,250 to \$1,499	6,002	13.4%
\$1,500 to \$1,999	6,473	14.4%
\$2,000 to \$2,999	2,750	6.1%
\$3,000 or more	1,024	2.3%

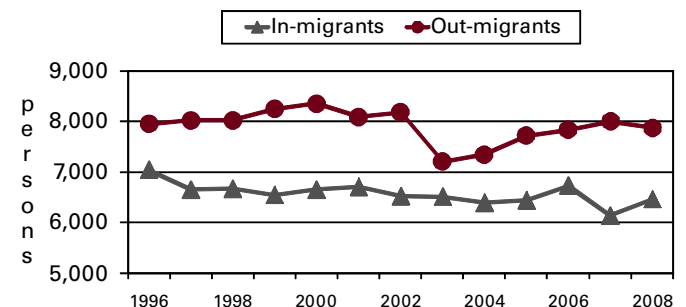
Median monthly owners cost **\$1,078**

Median monthly owners cost as a percentage of household income **23.2**

## Vital Statistics

	Number	Rate
Births / rate per 1,000 women aged 15 to 44	2,593	60.4
Teen births / rate per 1,000 females 15-19	311	38.8
Deaths / rate per 100,000 population	2,986	1,242.0
Marriages / rate per 1,000 population	1,161	4.6
Divorces / rate per 1,000 population	665	2.6

## Migration



## Agriculture

Land in farms (acres)	63,000
Number of farms	560
Average size (acres)	113
Total cash receipts	\$56,173,000
Per farm	\$100,309

## Education

Public schools	85
Students (Average Daily Membership)	36,281
Expenditures per student	\$9,446
Student-teacher ratio	18.2
Graduation rate	81.2
Teachers (Full Time Equivalent)	2,375.7
Non-public schools	19
Students	3,854
4-year public universities	1
Branches	0
2-year public colleges	0
Private universities and colleges	0
Public libraries (Main / Branches)	1 / 15

## Transportation

Registered motor vehicles	247,522
Passenger cars	177,054
Noncommercial trucks	28,467
Total license revenue	\$6,703,698.38
Interstate highway miles	55.34
Turnpike miles	24.51
U.S. highway miles	58.01
State highway miles	174.90
County, township, and municipal road miles	1,653.42
Commercial airports	5

## Voting

Number of precincts	273
Number of registered voters	181,759
Voted in 2010 election	87,414
Percent turnout	48.1%

## Health Care

Physicians (MDs & DOs)	638
Registered hospitals	4
Number of beds	1,190
Licensed nursing homes	25
Number of beds	2,704
Licensed residential care	23
Number of beds	1,467
Adults with employer-based insurance	52.7%
Children with employer-based insurance	52.0%

## State Parks, Forests, Nature Preserves, And Wildlife Areas

Areas/Facilities	4
Acreage	3,432.04

## Communications

Television stations	5
Radio stations	16
Daily newspapers	0
Circulation	0

## Crime

Total crimes reported in Uniform Crime Report	10,433
---	--------

## Finance

FDIC insured financial institutions (HQs)	2
Assets (000)	\$3,318,241
Branch offices	67
Institutions represented	11

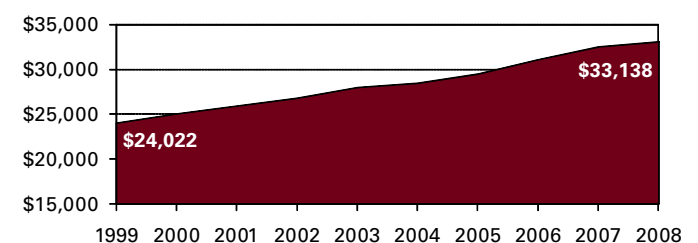
## Transfer Payments

Total transfer payments	\$1,983,372,000
Payments to individuals	\$1,943,167,000
Retirement and disability	\$710,423,000
Medical payments	\$881,358,000
Income maintenance (Supplemental SSI, family assistance, food stamps, etc)	\$189,617,000
Unemployment benefits	\$46,484,000
Veterans benefits	\$33,210,000
Federal education and training assistance	\$56,508,000
Other payments to individuals	\$25,567,000
Total personal income	\$7,907,108,000
Dependency ratio	25.1%

## Federal Expenditures

Direct expenditures or obligations	\$2,037,633,722
Retirement and disability	\$835,064,588
Other direct payments	\$668,283,480
Grant awards	\$405,115,857
Highway planning and construction	\$25,629,381
Temporary assistance to needy families	\$16,514,540
Medical assistance program	\$274,496,891
Procurement contract awards	\$31,475,813
Dept. of Defense	\$13,143,174
Salary and wages	\$97,693,984
Dept. of Defense	\$19,406,000
Other federal assistance	\$161,454,431
Direct loans	\$13,790,580
Guaranteed loans	\$93,541,301
Insurance	\$54,122,550

## Per Capita Personal Income



**Civilian Labor Force**

	2005	2006	2007	2008	2009
Civilian labor force	119,500	119,700	116,800	116,000	116,300
Employed	111,400	112,200	109,500	107,700	101,800
Unemployed	8,200	7,600	7,200	8,200	14,400
Unemployment rate	6.8	6.3	6.2	7.1	12.4

**Establishments, Employment, and Wages by Sector: 2008**

Industrial Sector	Number of Establishments	Average Employment	Total Wages	Average Weekly Wage
Private Sector	6,152	87,076	\$2,727,358,381	\$602
Goods-Producing	1,065	15,298	\$643,130,287	\$808
Natural Resources and Mining	39	453	\$19,686,637	\$835
Constuction	625	5,006	\$221,207,977	\$850
Manufacturing	401	9,838	\$402,235,673	\$786
Service-Providing	5,087	71,779	\$2,084,228,094	\$558
Trade, Transportation and Utilities	1,518	23,412	\$701,103,497	\$576
Information	94	1,959	\$80,862,800	\$794
Financial Services	611	3,998	\$159,760,391	\$768
Professional and Business Services	871	10,705	\$359,174,295	\$645
Education and Health Services	840	18,255	\$595,862,622	\$628
Leisure and Hospitality	637	9,941	\$116,450,980	\$225
Other Services	506	3,494	\$70,683,977	\$389
Federal Government		1,324	\$78,208,699	\$1,136
State Government		3,327	\$150,405,238	\$869
Local Government		10,038	\$369,860,450	\$709

Private Sector total includes Unclassified establishments not shown.

**Change Since 2003**

Private Sector	-1.7%	-3.5%	8.9%	12.7%
Goods-Producing	-7.1%	-9.4%	9.2%	20.4%
Natural Resources and Mining	0.0%	4.6%	38.5%	32.3%
Construction	-7.0%	-12.3%	8.4%	23.7%
Manufacturing	-8.0%	-8.4%	8.5%	18.4%
Service-Producing	-0.5%	-2.1%	8.8%	11.2%
Trade, Transportation and Utilities	-4.4%	1.9%	15.5%	13.4%
Information	27.0%	-5.7%	8.8%	15.4%
Financial Services	6.1%	-5.1%	0.9%	6.2%
Professional and Business Services	0.2%	15.0%	34.6%	17.1%
Education and Health Services	4.0%	-8.6%	-4.9%	4.1%
Leisure and Hospitality	5.3%	-7.7%	6.8%	15.4%
Other Services	-12.0%	-11.4%	-3.0%	9.6%
Federal Government		-4.6%	14.0%	19.5%
State Government		1.4%	25.1%	23.3%
Local Government		-0.3%	10.5%	11.0%

**Business Numbers**

	2004	2005	2006	2007	2008
Business starts	523	549	609	484	469
Active businesses	5,923	5,934	5,949	5,674	5,573

**Major Employers**

Austintown Local Schools	Govt
Boardman Local Schools	Govt
Forum Health	Serv
HM Health Partners	Serv
InfoCision Management	Serv
Mahoning County Government	Govt
UCFC/Home Savings & Loan Co	Fin
V&M Star	Mfg
Wal-Mart Stores Inc	Trade
Youngstown City Schools	Govt
Youngstown State University	Govt

**Residential Construction**

	2005	2006	2007	2008	2009
Total units	511	402	309	167	96
Total valuation (000)	\$90,254	\$84,859	\$55,883	\$35,658	\$22,836
Total single-unit bldgs	511	386	277	167	96
Average cost per unit	\$176,623	\$215,439	\$195,028	\$213,521	\$237,875
Total multi-unit bldg units	0	16	32	0	0
Average cost per unit	\$0	\$106,219	\$58,136	\$0	\$0