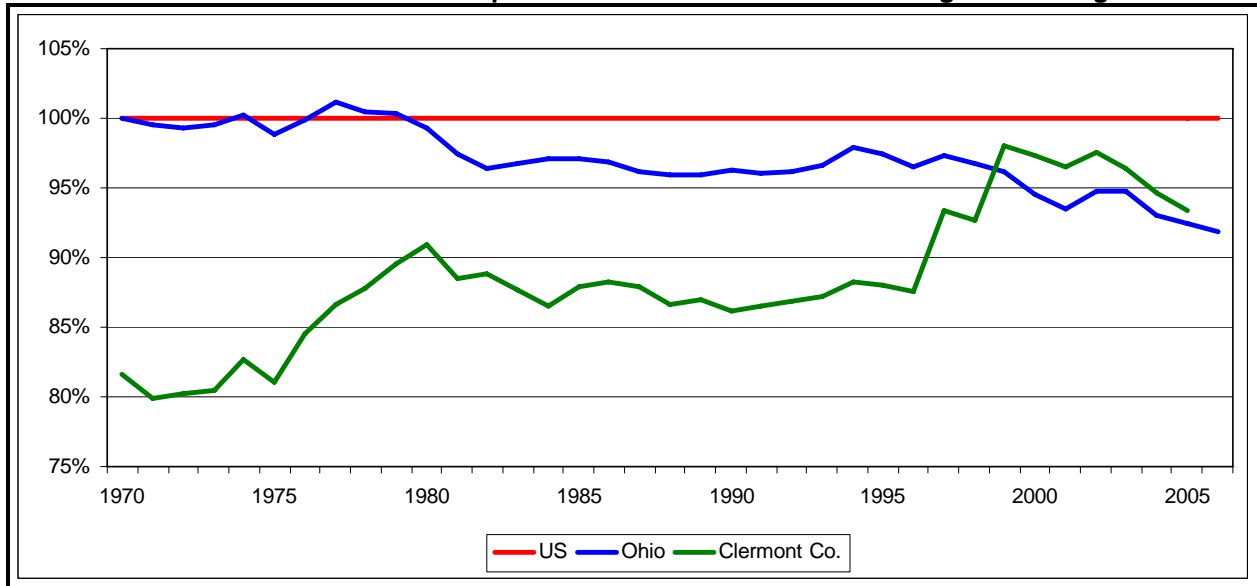


BEA Per Capita Personal Income Clermont County

Per Capita Personal Income; Selected Years

	1970	1980	1990	2000	2001	2002	2003	2004	2005	2006
US	\$4,085	\$10,114	\$19,477	\$29,843	\$30,562	\$30,795	\$31,466	\$33,090	\$34,471	\$36,276
Ohio	\$4,086	\$10,046	\$18,743	\$28,205	\$28,583	\$29,187	\$29,826	\$30,763	\$31,860	\$33,338
Clermont	\$3,336	\$9,191	\$16,781	\$29,059	\$29,484	\$30,045	\$30,329	\$31,331	\$32,190	---

Ohio and Clermont Co. Per Capita Personal Income as a Percentage of U.S. Figure



Composition of Personal Income; Selected Years

	Type of Income	1970	1980	1990	2000	2001	2002	2003	2004	2005	2006
U.S.	Net Earnings	77.2%	71.8%	67.7%	68.9%	68.6%	68.8%	69.2%	69.3%	69.5%	69.3%
	Dividends, etc.	13.8%	16.0%	20.0%	18.2%	17.7%	16.7%	16.1%	16.0%	15.6%	16.0%
	Transfer rcpts.	9.0%	12.2%	12.3%	12.9%	13.7%	14.5%	14.8%	14.7%	14.9%	14.8%
Ohio	Net Earnings	79.3%	71.9%	66.2%	67.8%	67.5%	67.9%	68.4%	68.9%	68.6%	68.2%
	Dividends, etc.	12.9%	15.4%	19.7%	17.8%	17.1%	16.0%	15.0%	14.4%	14.3%	14.6%
	Transfer rcpts.	7.8%	12.7%	14.1%	14.4%	15.5%	16.1%	16.6%	16.7%	17.1%	17.2%
Clermont	Net Earnings	83.1%	78.2%	74.5%	76.4%	75.9%	75.2%	75.7%	75.8%	75.3%	---
	Dividends, etc.	9.6%	11.1%	14.5%	12.3%	12.4%	12.4%	11.5%	11.2%	11.4%	---
	Transfer rcpts.	7.3%	10.7%	11.1%	11.3%	11.7%	12.4%	12.9%	12.9%	13.3%	---

Care should be taken when using county-level per capita personal income. Unusually high or low per capita personal income may be the result of unusual conditions, such as a major construction project or a natural disaster. Counties with a large agricultural sector may display erratic patterns due to multi-year contracts. Also, a large institutional population, such as colleges and prisons, tends to depress per capita income.

Source: Regional Economic Information System, Bureau of Economic Analysis, U.S. Department of Commerce.