

Ohio County Profiles



Department of
Development

Prepared by the Office of Policy, Research and Strategic Planning

Region 5

2007 Population: 1,598,137

Land Area: 1,726.7 square miles

Regional Economic Development Office Location:

One West Fourth Street, Suite 425

Cincinnati, OH 45202

Phone: (513) 852-2826 Fax: (513) 852-2840



Taxes

Taxable value of real property	\$35,323,060,440
Residential	\$26,780,319,700
Agriculture	\$464,962,590
Industrial	\$1,674,430,470
Commercial	\$6,403,347,680
Mineral	\$0
Ohio income tax liability	\$1,608,359,169
Average per return	\$2,248.79

Land Use/Land Cover

	Percent
Urban (Residential/Commercial/Industrial/ Transportation and Urban Grasses)	17.67%
Cropland	36.98%
Pasture	7.29%
Forest	36.66%
Open Water	1.07%
Wetlands (Wooded/Herbaceous)	0.00%
Bare/Mines	0.32%

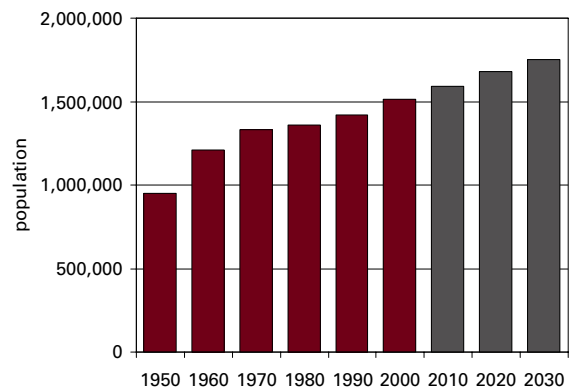
Largest Areas

	Census 2000	Est. 2007
Cincinnati city, Hamilton Co.	331,285	332,458
Colerain twp, Hamilton Co.	60,144	62,405
Hamilton city, Butler Co.	60,690	62,285
Green twp, Hamilton Co.	55,660	61,285
West Chester twp UB, But. C	52,671	55,331
Middletown city, Butler Co.	51,605	51,303
Union twp, Clermont Co.	42,332	43,893
Fairfield city, Butler Co.	42,097	42,294
Springfield twp, Hamilton Co	37,587	39,840
Miami twp, Clermont Co.	36,632	39,310

UB: Unincorporated Balance

Total Population

Census	Estimated
1800	15,692
1810	46,298
1820	87,167
1830	121,393
1840	154,565
1850	243,648
1860	312,186
1870	361,239
1880	421,058
1890	482,191
1900	523,543
1910	585,051
1920	634,710
1930	760,574
1940	806,239
1950	951,842
1960	1,209,438
1970	1,330,875
1980	1,359,770
1990	1,421,803
2000	1,514,470
2001	1,533,442
2002	1,544,111
2003	1,555,258
2004	1,567,443
2005	1,579,725
2006	1,591,741
2007	1,598,137
2010	1,593,080
2020	1,676,990
2030	1,753,660



Population by Race

	Number	Percent
Total Population	1,514,470	100.0%
White	1,241,542	82.0%
African-American	221,504	14.6%
Native American	3,425	0.2%
Asian	20,974	1.4%
Pacific Islander	380	0.0%
Other	7,830	0.5%
Two or More Races	18,815	1.2%
Hispanic (may be of any race)	16,308	1.1%
Total Minority	281,252	18.6%

Educational Attainment

	Number	Percent
Persons 25 years and over	970,080	100.0%
No high school diploma	163,563	16.9%
High school graduate	293,721	30.3%
Some college, no degree	190,576	19.6%
Associate degree	61,491	6.3%
Bachelor's degree	168,761	17.4%
Master's degree or higher	91,968	9.5%

Family Type by Employment Status

	Number	Percent
Total Families	394,685	100.0%
Married couple, husband and wife in labor force	169,628	43.0%
Married couple, husband in labor force, wife not	67,398	17.1%
Married couple, wife in labor force, husband not	18,042	4.6%
Married couple, husband and wife not in labor force	47,793	12.1%
Male householder, in labor force	15,531	3.9%
Male householder, not in labor force	4,772	1.2%
Female householder, in labor force	48,330	12.2%
Female householder, not in labor force	23,191	5.9%

Household Income in 1999

	Number	Percent
Total Households	591,957	100.0%
Less than \$10,000	51,489	8.7%
\$10,000 to \$19,999	66,931	11.3%
\$20,000 to \$29,999	73,060	12.3%
\$30,000 to \$39,999	71,380	12.1%
\$40,000 to \$49,999	61,778	10.4%
\$50,000 to \$59,999	54,523	9.2%
\$60,000 to \$74,999	66,263	11.2%
\$75,000 to \$99,999	66,874	11.3%
\$100,000 to \$149,999	50,526	8.5%
\$150,000 to \$199,999	13,967	2.4%
\$200,000 or more	15,166	2.6%
Median household income	\$45,066	

Population by Age

	Number	Percent
Total Population	1,514,470	100.0%
Under 6 years	126,743	8.4%
6 to 17 years	271,143	17.9%
18 to 24 years	146,504	9.7%
25 to 44 years	461,293	30.5%
45 to 64 years	327,555	21.6%
65 years and more	181,232	12.0%
Median Age	35.1	

Family Type by Presence of Own Children Under 18

	Number	Percent
Total Families	394,685	100.0%
Married-couple families with own children	143,161	36.3%
Male householder, no wife present, with own children	11,038	2.8%
Female householder, no husband present, with own children	45,339	11.5%
Families with no own children	195,147	49.4%

Poverty Status in 1999 of Families By Family Type by Presence Of Related Children

	Number	Percent
Total Families	394,685	100.0%
Family income above poverty level	367,085	93.0%
Family income below poverty level	27,600	7.0%
Married couple, with related children	4,413	16.0%
Male householder, no wife present, with related children	1,690	6.1%
Female householder, no husband present, with related children	16,615	60.2%
Families with no related children	4,882	17.7%

Ratio of Income in 1999 To Poverty Level

	Number	Percent
Population for whom poverty status is determined	1,476,042	100.0%
Below 50% of poverty level	67,851	4.6%
50% to 99% of poverty level	76,674	5.2%
100% to 149% of poverty level	92,365	6.3%
150% to 199% of poverty level	101,201	6.9%
200% of poverty level or more	1,137,951	77.1%

Residence in 1995

	Number	Percent
Population 5 years and over	1,409,207	100.0%
Same house in 1995	756,214	53.7%
Different house, same county	392,918	27.9%
Different county, same state	137,964	9.8%
Different state	103,646	7.4%
Puerto Rico or U.S. islands	269	0.0%
Foreign country	18,196	1.3%

Travel Time To Work

	Number	Percent
Workers 16 years and over	723,699	100.0%
Less than 15 minutes	181,216	25.0%
15 to 29 minutes	295,074	40.8%
30 to 44 minutes	155,214	21.4%
45 to 59 minutes	44,406	6.1%
60 minutes or more	27,430	3.8%
Worked at home	20,359	2.8%

Mean travel time 23.8 minutes

Housing Units

	Number	Percent
Total housing units	631,104	100.0%
Occupied housing units	591,851	93.8%
Owner occupied	388,960	61.6%
Renter occupied	202,891	32.1%
Vacant housing units	39,253	6.2%

Year Structure Built

	Number	Percent
Total housing units	631,104	100.0%
Built 1995 to March 2000	51,088	8.1%
Built 1990 to 1994	42,880	6.8%
Built 1980 to 1989	70,286	11.1%
Built 1970 to 1979	97,652	15.5%
Built 1960 to 1969	92,134	14.6%
Built 1950 to 1959	99,045	15.7%
Built 1940 to 1949	53,954	8.5%
Built 1939 or earlier	124,065	19.7%

Median year built 1965

Value for Specified Owner-Occupied Housing Units

	Number	Percent
Specified owner-occupied housing units	341,735	100.0%
Less than \$20,000	880	0.3%
\$20,000 to \$39,999	4,635	1.4%
\$40,000 to \$59,999	14,856	4.3%
\$60,000 to \$79,999	40,012	11.7%
\$80,000 to \$99,999	66,618	19.5%
\$100,000 to \$124,999	58,342	17.1%
\$125,000 to \$149,999	45,423	13.3%
\$150,000 to \$199,999	53,588	15.7%
\$200,000 to \$249,999	23,591	6.9%
\$250,000 to \$499,999	28,367	8.3%
\$500,000 to \$999,999	4,357	1.3%
\$1,000,000 or more	1,066	0.3%

Median value \$107,519

House Heating Fuel

	Number	Percent
Occupied housing units	591,851	100.0%
Utility gas	365,337	61.7%
Bottled, tank or LP gas	19,958	3.4%
Electricity	161,235	27.2%
Fuel oil, kerosene, etc	35,353	6.0%
Coal, coke or wood	2,345	0.4%
Solar energy or other fuel	4,755	0.8%
No fuel used	2,868	0.5%

Gross Rent

	Number	Percent
Specified renter-occupied housing units	201,505	100.0%
Less than \$100	3,942	2.0%
\$100 to \$199	9,972	4.9%
\$200 to \$299	11,162	5.5%
\$300 to \$399	29,016	14.4%
\$400 to \$499	38,335	19.0%
\$500 to \$599	33,689	16.7%
\$600 to \$699	24,884	12.3%
\$700 to \$799	16,577	8.2%
\$800 to \$899	10,779	5.3%
\$900 to \$999	6,106	3.0%
\$1,000 to \$1,499	7,707	3.8%
\$1,500 or more	3,105	1.5%
No cash rent	6,231	3.1%

Median gross rent \$515

Median gross rent as a percentage of household income in 1999

Selected Monthly Owner Costs for Specified Owner-Occupied Housing Units

	Number	Percent
Specified owner-occupied housing units with a mortgage	256,767	100.0%
Less than \$400	3,852	1.5%
\$400 to \$599	16,258	6.3%
\$600 to \$799	38,175	14.9%
\$800 to \$999	49,958	19.5%
\$1,000 to \$1,249	53,459	20.8%
\$1,250 to \$1,499	37,407	14.6%
\$1,500 to \$1,999	34,121	13.3%
\$2,000 to \$2,999	18,068	7.0%
\$3,000 or more	5,469	2.1%

Median monthly owners cost \$1,094

Median monthly owners cost as a percentage of household income

Vital Statistics

	Number	Rate
Births / rate per 1,000 women aged 15-44	22,450	68.2
Teen births / rate per 1,000 females 15-17	740	21.4
Deaths / rate per 100,000 population	13,425	853.9
Marriages / rate per 1,000 population	9,125	5.8
Divorces / rate per 1,000 population	5,142	3.3

Agriculture

Land in farms (acres)	398,000
Number of farms	3,380
Average size (acres)	118
Total cash receipts	\$115,617,000
Per farm	\$34,105

Education

Public schools	416
Students (Average Daily Membership)	237,405
Expenditures per student	\$9,793
Student-teacher ratio	n. a.
Graduation rate	n. a.
Teachers (Full Time Equivalent)	13,619.6
Non-public schools	153
Students	44,866
4-year public universities	2
Branches	5
2-year public colleges	1
Private universities and colleges	7
Public libraries (Main / Branches)	9 / 56

Transportation

Registered motor vehicles	1,544,923
Passenger cars	1,142,261
Noncommercial trucks	175,354
Total license revenue	\$38,643,333.78
Interstate highway miles	155.59
Turnpike miles	0.00
U.S. highway miles	251.95
State highway miles	610.23
County, township, and municipal road miles	7,002.87
Commercial airports	9

Voting

Number of precincts	1,543
Number of registered voters	1,059,515
Voted in 2006 election	553,843
Percent turnout	52.3%

Health Care

Physicians (MDs & DOs)	4,800
Registered hospitals	17
Number of beds	6,139
Licensed nursing homes	233
Number of beds	24,070
Licensed residential care	117
Number of beds	11,786
Adults with employer-based insurance	65.5%
Children with employer-based insurance	65.0%

State Parks, Forests, Nature Preserves, And Wildlife Areas

Facilities	32
Acreage	5,065.79

Communications

Television stations	8
Radio stations	35
Daily newspapers	5
Circulation	317,658

Crime

Total crimes reported in Uniform Crime Report	64,888
---	--------

Finance

FDIC insured financial institutions (HQs)	37
Assets	\$312,235,927
Branch offices	539
Institutions represented	54

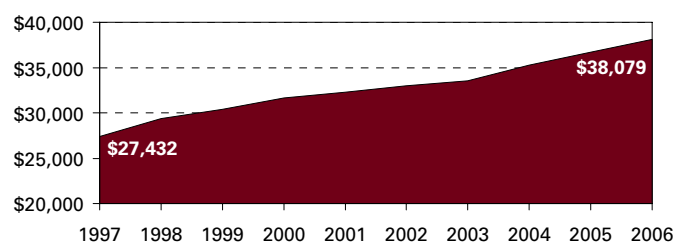
Transfer Payments

Total transfer payments	\$8,301,782,000
Payments to individuals	\$7,880,373,000
Retirement and disability	\$3,265,741,000
Medical payments	\$3,529,178,000
Income maintenance (Supplemental SSI, family assistance, food stamps, etc)	\$745,048,000
Unemployment benefits	\$140,682,000
Veterans benefits	\$134,523,000
Federal education and training assistance	\$61,854,000
Other payments to individuals	\$3,347,000
Total personal income	\$60,611,657,000
Dependency ratio	13.7%

Federal Expenditures

Direct expenditures or obligations	\$11,815,513,398
Retirement and disability	\$3,515,196,662
Other direct payments	\$2,202,577,741
Grant awards	\$2,002,711,474
Highway planning and construction	\$90,198,110
Temporary assistance to needy families	\$97,108,462
Medical assistance program	\$1,098,489,545
Procurement contract awards	\$3,295,800,377
Dept. of Defense	\$2,392,527,937
Salary and wages	\$799,227,144
Dept. of Defense	\$57,921,000
Other federal assistance	\$1,313,780,405
Direct loans	\$43,761,793
Guaranteed loans	\$590,429,219
Insurance	\$679,589,393

Per Capita Personal Income



Civilian Labor Force

	2003	2004	2005	2006	2007
Civilian labor force	800,300	807,600	812,800	827,300	836,300
Employed	757,300	763,400	769,600	785,000	794,500
Unemployed	43,000	44,200	43,100	42,300	41,800
Unemployment rate	5.4	5.5	5.3	5.1	5.0

Establishments, Employment, and Wages by Sector: 2006

Industrial Sector	Number of Establishments	Average Employment	Total Wages	Average Weekly Wage
Private Sector	37,916	707,583	\$30,213,808,279	\$821
Goods-Producing	6,067	139,426	\$7,244,978,352	\$999
Natural Resources and Mining	98	858	\$29,295,154	\$656
Constuction	3,764	40,802	\$1,797,062,539	\$846
Manufacturing	2,207	97,767	\$5,418,620,659	\$1,065
Service-Providing	31,849	568,156	\$22,968,829,927	\$777
Trade, Transportation and Utilities	9,211	153,264	\$5,628,597,384	\$706
Information	602	13,414	\$814,189,696	\$1,167
Financial Services	4,080	50,671	\$2,890,292,167	\$1,096
Professional and Business Services	7,155	132,242	\$7,251,226,950	\$1,054
Education and Health Services	3,726	115,163	\$4,437,180,716	\$740
Leisure and Hospitality	3,401	77,779	\$1,272,378,650	\$314
Other Services	3,552	25,343	\$668,340,740	\$507
Unclassified	125	282	\$6,623,624	\$451
Federal Government		10,872	\$673,210,590	\$1,190
State Government		* * * * *	Data Not Available	* * * * *
Local Government		* * * * *	Data Not Available	* * * * *

Change Since 2001

Private Sector	2.8%	0.6%	18.4%	17.8%
Goods-Producing	-3.3%	-9.3%	4.3%	15.0%
Natural Resources and Mining	-1.0%	-16.7%	-19.4%	-3.2%
Construction	-0.8%	3.7%	18.8%	14.5%
Manufacturing	-7.2%	-13.8%	0.4%	16.4%
Service-Producing	4.0%	3.4%	23.6%	19.7%
Trade, Transportation and Utilities	-2.5%	-3.6%	8.4%	12.4%
Information	1.0%	-17.4%	-7.0%	12.6%
Financial Services	10.7%	0.8%	27.6%	26.6%
Professional and Business Services	12.3%	7.3%	36.7%	27.4%
Education and Health Services	9.2%	13.7%	36.2%	19.7%
Leisure and Hospitality	7.6%	8.4%	20.6%	11.3%
Other Services	-5.3%	-7.5%	9.2%	18.2%
Federal Government		-7.8%	17.4%	27.3%
State Government		* * * * *	Data Not Available	* * * * *
Local Government		* * * * *	Data Not Available	* * * * *

Business Numbers

	2003	2004	2005	2006	2007
Business starts	4,529	3,767	3,677	4,759	3,601
Active businesses	31,614	32,081	32,233	32,592	31,106

Major Employers

AK Steel Holding Corp	Mfg
American Financial Group Inc	Ins
Cedar Fair/Kings Island	Serv
Convergys Corp	Serv
Fifth Third Bancorp	Fin
Ford Motor Co	Mfg
General Electric Co	Mfg
International Paper Co	R&D
Kroger Co	Trade
Macy's Inc	Trade
Miami University	Govt
Milacron Inc	Mfg
Procter & Gamble Co	Mfg
Siemens AG/UGS Corp	Serv
University of Cincinnati	Govt

Residential

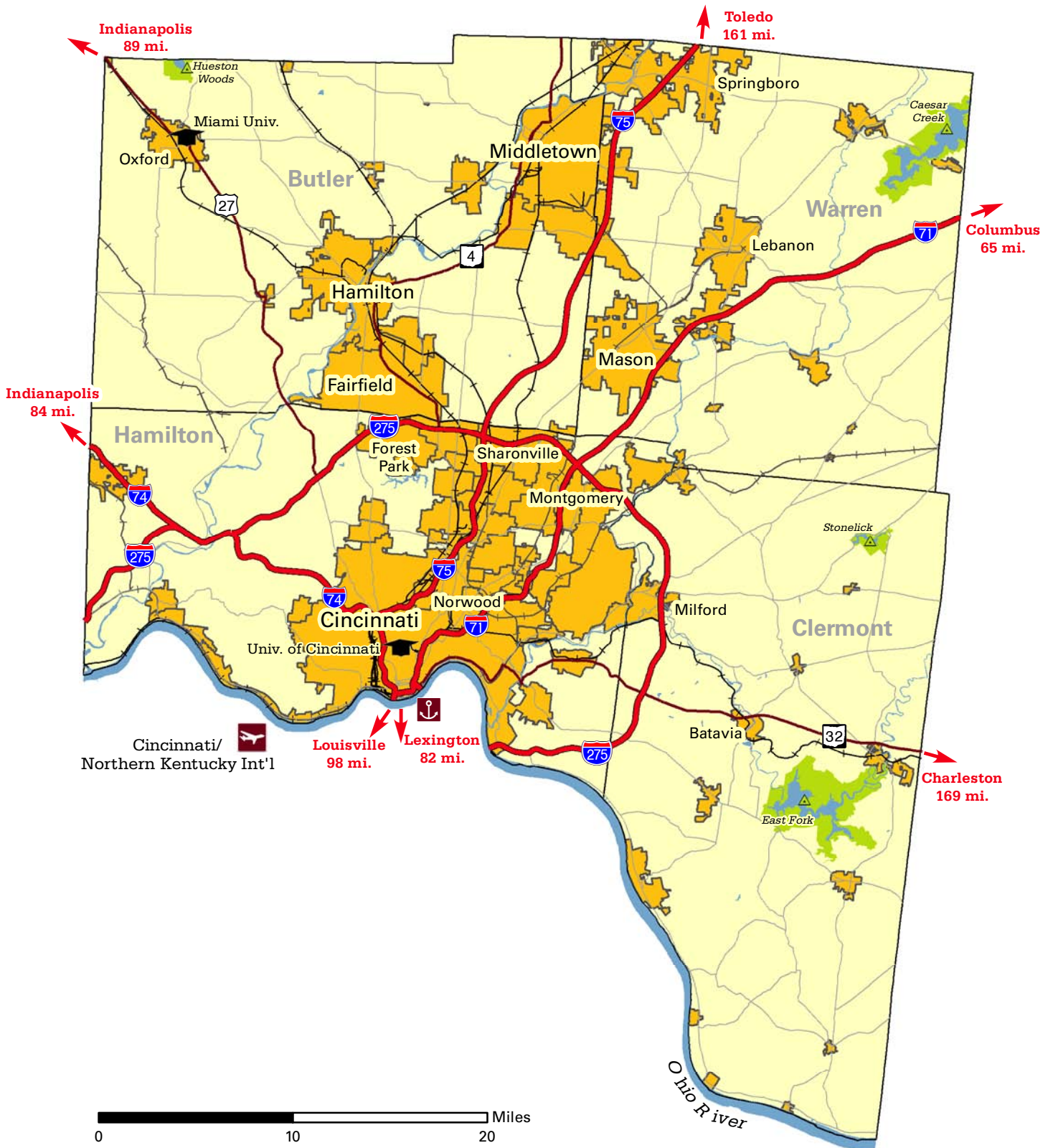
Construction

	2003	2004	2005	2006	2007
Total units	9,083	8,617	8,889	6,305	4,154
Total valuation (000)	\$1,267,667	\$1,316,029	\$1,501,078	\$1,171,998	\$859,326
Total single-unit bldgs	7,322	7,051	7,246	4,797	3,212
Average cost per unit	\$157,669	\$175,368	\$193,624	\$218,085	\$244,971
Total multi-unit bldg units	1,761	1,566	1,643	1,508	942
Average cost per unit	\$64,292	\$50,771	\$59,697	\$83,450	\$76,943

Region 5 Southwest Ohio



Department of
Development



One W. Fourth St., Suite 425
Cincinnati, OH 45202
Phone: (513) 852-2826
Fax: (513) 852-2840

Population (2007): 1,598,137
Area: 1,726.7 sq. mi.